
Wynncom W617 User Manual



Note: The content of the manual is correct when it is released, but "Wynncom Digital Devices Pvt. Ltd" reserves the right to modify the technical specification without additional notification. Some content in the manual may be different from the mobile phone as the accessory, software, SIM card or service varies by providers.

Table of Contents

<u>SAFETY PRECAUTIONS.....03</u>	
<u>1. Message..... 14</u>	
1.1. Write message..... 14	
1.1.1. SMS..... 14	
1.1.2. MMS..... 15	
1.2. Inbox..... 15	
1.3. Outbox..... 15	
1.4. Draft box..... 15	
1.5. Sent box..... 15	
1.6. Templates..... 16	
1.7. Schedule SMS..... 16	
1.8. Cell Broadcast..... 16	
1.9. Setting..... 16	
1.10. Message Capacity..... 16	
1.11. Schedule SMS..... 16	
<u>2. Phonebook..... 16</u>	
<u>3. Call Logs..... 17</u>	
3.1. All Calls..... 17	
3.2. Missed Calls..... 17	
3.3. Received Calls..... 17	
3.4. Dialed Calls..... 17	
<u>4. Settings..... 18</u>	
4.1. Phone Settings..... 18	
4.2. Display..... 18	
4.3. Security..... 19	
4.4. Call settings..... 19	
4.5. Connections..... 21	
<u>5. Y Zone..... 21</u>	
5.1 Smart Auto Call Record..... 21	
5.2 Private Data Protections..... 21	
5.3 Mobile Tracker..... 21	
5.4 Games..... 22	
5.4.1 Tetris..... 22	

5.4.2 Snake.....	22
5.5 Facebook/MSN/Yahoo/Hungama	22
<u>6. Multimedia.....</u>	<u>22</u>
<u>6.1 Video Recorder</u>	<u>22</u>
6.2 Video player.....	22
6.3 Image Viewer.....	23
6.4 FM radio.....	23
6.5 Sound Recorder	24
7. Profiles.....	24
8. My files	24
9.Organizer.....	24
9.1 Backup.....	24
9.2Calendar	25
9.3 Calculator	25
9.4 World clock.....	25
9.5Clock.....	25
9.6Unite conversion	25
9.7 Bluetooth.....	26
9.8 E-book	26
9.9 STK..	26
10. Audio.....	26
11. Services	27
11.1 Input URL.....	27
11.2 Bookmarks	27
11.3 History	27
11.4 Homepage	27
11.5 Settings	27
12. Camera	27
13. Technical Specification	27
14. Warranty Card.....	28



Important safety precautions

This section contains important information on the safe and efficient operation of your mobile device.

For your safety, please refer to the guidelines prior to using the phone.

Note: Failure to comply with the following precautions may be dangerous or illegal.

Drive safely at all times

Do not use a hand-held phone while driving. Park the vehicle first.

Switch off the phone when refueling

Do not use the phone at a refueling point (service station) or near fuels or chemicals.

Switch off in an aircraft

Wireless phones can cause interference with the communication system of aircraft. Using them in an aircraft is both illegal and dangerous. User can keep the phone in flight mode.

Switch off the phone near all medical equipment

Hospitals or health care facilities may be using equipment that could be sensitive to external radio frequency energy. Follow any regulations or rules in force.

Interference

All wireless phones may be subject to interference, which could affect their performance.

Be aware of special regulations

Meet any special regulations in force in any area and always switch off your phone whenever it is forbidden to use it, or when it may cause interference or danger.

Water resistance

Your phone is not water-resistant. Keep it dry.

Sensible use

Use only in the normal position (held to the ear). Avoid unnecessary contact with the antenna when the phone is switched on.

Keep your phone away from small children

Keep the phone and all its parts, including accessories, out of the reach of small children.

Accessories and batteries

Use only approved batteries and accessories, such as headsets and PC data cables. Use of any unauthorized accessories could cause damages to you and your phone and may be dangerous.

If jewelry, keys, beaded chains, or other conductive materials touch exposed battery terminals, this could complete an electrical circuit (short circuit), become very hot, and could cause damage or injury. Be careful when handling a charged battery, particularly when placing it inside a pocket, purse, or other Container with metal objects.

- * Never use a charger or a battery that is damaged in any way.
 - * Use the battery only for its intended purpose.
 - * If you use the phone near the network's base station, it uses less power. Talk and standby time are greatly affected by the signal strength on the cellular network and the parameters set by the network operator.
 - * Battery charging time depends on the remaining battery charge, the type of battery, and the charger used. The battery can be charged and discharged hundreds of times, but it will gradually wear out. When the operation time is noticeably shorter than normal, it is time to buy a new battery.
 - * If left unused, a fully charged battery will discharge itself over time.
 - * Use only approved batteries and battery chargers. Disconnect the charger from the power source when it is not in use. Do not leave the battery connected to a charger for more than a week, since overcharging may shorten its life.
 - * Extreme temperatures will affect the charging capacity of your battery: it may require cooling or warming first.
 - * Do not leave the battery in hot or cold places because the capacity and lifetime of the battery will be reduced. Try to keep the battery at room temperature. A phone with a hot or cold battery may not work temporarily, even when the battery is fully charged.
- Do not short-circuit the battery. Accidental short-circuiting can occur when a metallic object like a coin, clip or pen causes a direct connection between the + and – terminals of the battery (metal strips on the battery). For example, do not carry a spare battery in a pocket or bag where the battery may contact metal objects. Short-circuiting the terminals may damage the battery or the object causing the short-circuiting.
- * Dispose off used batteries in accordance with local regulations. Always recycle. Do not dispose off batteries in a fire.
 - * Do not charge the battery while using the phone.
 - * During the course of charging, it is normal to find the battery and the phone slightly heat-up. The phone will automatically protect itself when battery temperature rises so as to control temperature variation.

Note: This phone is charged only around 50%. Please connect with AC and charge it fully.

Operating Environment

Remember to follow any special regulations in force in the area you are in, and always switch off your phone whenever it is forbidden to use it, or when it may cause interference or danger. When connecting the phone or any accessory to another device, read its user's guide for detailed safety instructions. Do not connect incompatible products.

As with other mobile radio transmitting equipment, users are advised that for the satisfactory operation of the equipment and for the safety of personnel, it is recommended that the equipment should only be used in the normal operating position (held to your ear with the antenna pointing over your shoulder).

Ensure to avoid extreme heat or cold; do not place your phone in temperatures below -10°C/14°F or above 45°C/113°F.

Electronic devices

Most modern electronic equipment is shielded from radio frequency (RF) signals. However, certain electronic equipment may not be shielded against the RF signals from your wireless phone. Consult the manufacturer to discuss alternatives.

Pacemakers

Pacemaker manufacturers recommend that a minimum distance of 15 cm (6 inches) be maintained between a wireless phone and a pacemaker to avoid potential interference with the pacemaker. These recommendations are consistent with the independent research and recommendations of Wireless Technology Research. If you have any reason to suspect that interference is taking place, switch off your phone immediately.

Hearing aids

Some digital wireless phones may interfere with some hearing aids. In the event of such interference, you may wish to consult your hearing aid manufacturer to discuss alternatives.

SIM AT Service

SIM Card provides several value-added services.

These functions will only display and work on the menu of the phone when your SIM card is supported. The content and the terms of the function lists will depend on your network service provider.

Please contact your network service provider (a network operator) in regards with availability of any services related to the SIM card, application information and the costs.

Other medical devices

If you use any other personal medical devices, consult the manufacturer of your device to determine if it is adequately shielded from external RF energy. Your physician may be able to assist you in obtaining this information. Switch off your phone in health care facilities when regulations posted in these areas instruct you to do so.

Vehicles

RF signals may affect improperly installed or inadequately shielded electronic systems in motor vehicles. Check with the manufacturer or its representative regarding your vehicle. You should also consult the manufacturer of any equipment that has been added to your vehicle.

Posted facilities

Switch off your phone in any facility where posted notices require you to do so.

Potentially explosive environments

Switch off your phone when in any area with a potentially explosive atmosphere, and obey all signs and instructions. Sparks in such areas could cause an explosion or fire resulting in bodily injury or even death.

Users are advised to switch off the phone while at a refueling point (service station). Users are reminded of the need to observe restrictions on the use of radio equipment in fuel depots (fuel storage and distribution areas), chemical plants, or where blasting operations are in progress. Areas with a potentially explosive atmosphere are often but not always clearly marked. They include the areas below decks on boats, chemical transfer or storage facilities, vehicles using liquefied

petroleum gas, such as propane or butane, areas where the air contains chemicals or particles, such as grain, dust or metal powders, and any other area where you would normally be advised to turn off your vehicle engine.

Emergency calls

This phone, like any wireless phone, operates using radio signals, wireless, and landline networks as well as user-programmed functions, which cannot guarantee connection in all conditions. Therefore, you should never rely solely on any wireless phone for essential communications like medical emergencies. To make or receive calls, the phone must be switched on and in a service area with adequate signal strength. Emergency calls may not be possible on all wireless phone networks or when certain network services and/or phone features are in use. Check with local service providers.

To make an emergency call :(For INDIA example: 112,119,101,102)

1. Key in the emergency number for your present location. Emergency numbers may vary by location.
2. Press the Send Key.
3. Inform your location. Do not end the call until given permission to do so.

Certain features like Call Barring may need to be deactivated before you can make an emergency call. Consult this document with your local cellular service provider.

Other important safety information

★ Only qualified personnel should service the phone or install the phone in a vehicle. Faulty installation or service may be dangerous and may invalidate any warranty applicable to the device.

Check regularly that all wireless phone equipment in your vehicle is mounted and operating properly.

★ Do not store or carry flammable liquids, gases, or explosive materials in the same compartment as the phone, its parts, or accessories.

★ For vehicles equipped with an air bag, remember that an air bag inflates with great force. Do not place objects, including installed or portable wireless equipment, in the area over the air bag or in the air bag deployment area. Improperly installed wireless equipment could result in serious injury if the air bag inflates.

★ Switch off your phone before boarding an aircraft. It is dangerous and illegal to use wireless phones in an aircraft because they can interfere with the operation of the aircraft.

★ Failure to observe these instructions may lead to the suspension or denial of telephone services to the offender, or legal action, or both.

Wynncom Authorized Care Centre

Only Wynncom qualified service personnel may repair your phone.

It is highly recommended to have a repair or service by qualified service personnel. Use only the approved accessories and batteries.

Introduction

Phone Display



Key	Function
Call Dial & Receive Key	Dial and receive calls via SIM1 or SIM2 card. View call history of SIM1 or SIM2 in idle mode.
Call Reject Key/Power on/off key	Press and hold to turn the phone on/off. End a call or reject an incoming call. Return to the idle mode.
Left Soft Key	Enter Main Menu.
Right Soft Key 0 key	Access the phonebook list in idle mode. Return to the previous menu. Press and hold to open torch.
OK Key	Confirm a selection.
Numeric key	Enter numbers, letters or characters. Select a submenu item with the corresponding number.
*	Press and hold to toggle between *, +, P and W.

	Press to enter symbol when editing text.
#	Press to switch input modes when entering text. Press and hold to activate or deactivate the silent mode in idle mode.
Navigation Key	Press to access four functions in idle mode (Up: access SIM in idle screen; Down: access Widgets in idle screen; Within a menu, press Up, Down, Left or Right to scroll through menu options.

Note: "Press" in this manual, means to press and release the key; "press and hold" means to press and hold the key for at least 3 seconds.

Getting Started

Please read the safety instructions in the "Safety Information and Notices" section before use.

Inserting the SIM Card and the battery

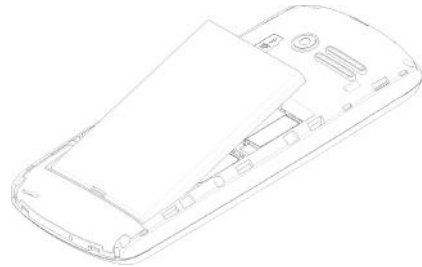
Remove the back cover

Make sure the phone is switched off. You need to remove the back cover of your phone before you can insert the SIM card. Hold the phone with the front facing downwards, pull the battery cover downwards and lift the cover upwards to remove it.



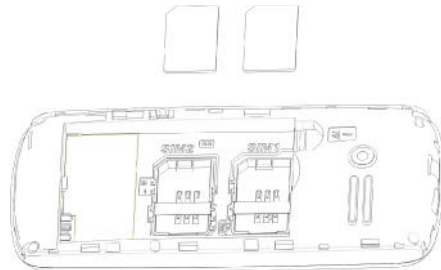
Remove the battery

Put your finger on the black holder located at the bottom of the battery slot and lift the battery up to remove it. for further clarification please refer the pic below :



Insert the SIM card

Make sure that the clipped corner of the SIM card is facing the correct direction and the metallic contacts are facing downwards. Slide the SIM card into the card slot until it stops. The slot for each network is indicated by 'SIM1' and "SIM2' at the top of the slot. for further clarification please refer the pic below:



Install the battery

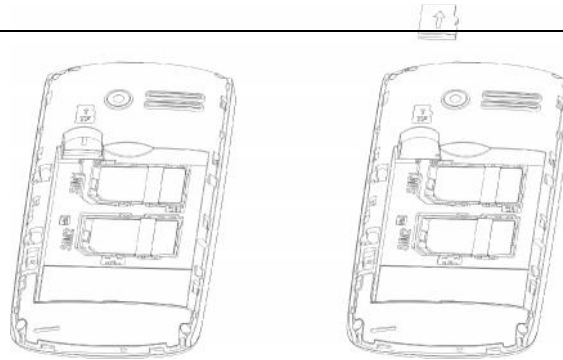
With the metallic contacts of the battery facing the metallic contacts in the battery slot, press the battery down until it locks into place.

Install the back cover

Align and hook the back cover to the top of the battery slot and then push the back cover upwards until it locks into place.

Inserting a Micro SD (External Memory) Card

Put inside the micro SD card against the groove with the golden metal contact facing downward.



Turning the phone on

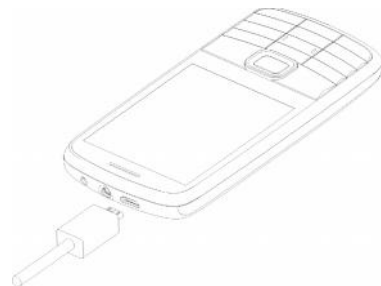
To turn the phone on, press and hold the Call End key. If you have already enabled the Sim Lock function then enter the PIN code (the 4 to 8 digit code of your SIM card). It is preconfigured and provided to you by your network operator or retailer. If you enter an incorrect PIN code 3 times in succession, your SIM card will be locked. To unlock it, you must obtain the PUK code from your network operator

Charging the Battery

Ensure the battery is inserted in the handset. To charge the battery, plug in the charger connector and then plug the other end into an AC power socket. The battery symbol indicates the charging status. While charging, the charge indicators will scroll. When all the scroll bars are steady, the battery is fully charged. It takes about 4 hours to fully charge the battery.

Disconnect the charger from the phone.

Disconnect the charger from the AC power socket. For further clarification please refer the pic below :



Note: If the battery is completely discharged, the battery icon will reappear after a few minutes of charging.

Important Password

Phone lock password is set as 0000 by default.

Keypad Lock and Unlock

Go to Settings > Security Settings > Auto keypad lock to select the time for keypad lock.

In idle mode, if the time expires, the keypad will be locked automatically.

Long Press * key to Lock Keypad

Press LSK+ * Key in quick succession to unlock the keypad manually.

Text Entry

1. Input Method

Your cellular phone supports several input methods, which include:

Smart (ABC/abc/Abc)

Multitap (ABC/abc/Abc)

Numeric Input (123)

Hindi Input

1.1 Changing the input modes

During text editing, you can press the # Key to switch input modes.

1.2 Entering Symbols

In any input mode, press the * Key to open the symbols input screen. Use the navigation key to choose the desired symbol and the OK key to select it.

2. Smart Input

Letters and symbols represented by each key are as follows:

2 to 9	Press to input letters
1	Press to input symbol
0	Press to input space
Left Soft Key (Select)	Press to confirm the letter or word.
Right Soft Key (Clear)	Press to clear a letter, press and hold to clear all entries.
OK Key	Press to send the message.
#	Switch between input mode
*	Press to activate punctuation mode

Example: How to enter the word "HOME"

1. Press the # Key to switch to Smart ABC.
2. Press 4 6 6 3, the first word "GOOD" appears.
3. Use navigation keys to browse and select "HOME".
4. Press the Left Soft Key [Select] to confirm "HOME".

3. Multitap Input

This method requires multiple key presses to reach the desired character: the letter "h" is the second letter on the 4 key, so you must press 4 twice quickly to enter "h". Using this mode requires you to press a key as many times as needed to enter the desired letter.

Example:

To enter the word "home" in Multitap input mode "abc", press key 4(GHI) twice, press key 6(MNO) thrice, press key 6(MNO) once and key 3(DEF) twice.

4. Numeric Input

Press the # Key to select "123" input option then you can enter the numbers.

Calling

1. Making a Call

In idle mode, enter the phone number. Press the Dial key to call the number from SIM1 voice call or SIM2 voice call.

Press the Call End Key to end the call.

Note: During a call, press the navigation up and down key to adjust the volume. You can press the Left Soft Key [Options] to choose Sound recorder to record.

In most countries, recording telephone conversations is subject to legislation. We advise you to notify the caller if you intend to record your conversation and only do so if they agree.

2. Answering a Call

Press the Dial Key to answer calls to respective numbers.

Press the Call End key to reject it.

Menu Functions

How to Use

Select Menu

Press the ok Key [Menu] to enter main menu in idle mode.

Press the Navigation Key to choose desired operation and press the Left Soft Key [Ok] to enter the selected operation.

You can exit a menu and return to idle mode by pressing the Right Soft Key [Back] or the Call End Key.

Main Menu

Message	contact	Call logs
Settings	Y -Zone	Multimedia
Profiles	My File	Organizer
Audio	Services	Camera

For further clarification refer the main GUI picture below:



1. Message

This chapter introduces the message services provided by the GSM network. Some services may not be supported by the local network.

1.1 Write message

1.1.1. SMS

Enter the SMS editor screen. You may use keypad to input English, digits and punctuation marks. After writing the text message, you have the follow options:

Send: Send the message.

Add contact info: Add new recipient.

Insert template: Insert template.

Add Phiz: Add phiz in message

Save as draft: Save to Draft box.

Exit: Exit the message box.

1.1.2. MMS

The MMS function allows you to send text and multimedia such as pictures, audio and video to the other phone. After creating the message, you have the following options:

Send: Send the message.

Add Recipient: Add new recipient.

Insert: Insert Picture, audio, video, template, VCard, VCalendar.

Insert Slide: Insert a new page before or after the current page.

Preview: Preview the current MMS.

Convert to SMS: Convert this MMS to SMS.

Save as draft: Save to Draft box.

Set Slide time: Set the playback time.

Text Layout: Set text layout.

1.2 Inbox

The Inbox lists the received SMS and MMS. You have the following options: Open Reply, Delete, Lock, move to SIM /Phone, Copy to phone/SIM, Mark, sort, add the sender to contact list and Details.

After you select to read a message, you have the following options: Reply, Forward, Delete, Call Sender, Save sender, Copy to SIM, and View Detail.

The Mark function is for you to select messages for further operation, such as deletes all marked messages, conveniently.

1.3 Outbox

The out-going messages are listed here. Your options include: Resend, Delete, Delete all, Move to draft, View details.

1.4 Draft box

Saved messages and unsent message are saved here. Options are Open, New message, Delete, Copy, sort, Mark and View Detail.

After you select to read a message, you will enter the message editor.

1.5 Sent box

Sent messages are saved here. Your options include: Open, new message, Delete, Mark and View Details.

After you select to read a message, you have the following options: Forward, Delete, Call recipient, and View Detail.

1.6 Templates

You can preset frequently used sentences here to avoid repeated input when writing a message.

1.7 Schedule SMS

You can schedule the SMS for particular date and time and send.

1.8 Cell Broadcast

Look up the broadcast messages.

1.9 Setting

There are eight options: SIM 1/SIM2 Message Service center number, validity period, Message Type, Delivery report, Direct Reply, Inbox Location, Save sent message.

--SIM1 Service Center No. : Display the Service center number of SIM1.

--SIM2 Service Center No. : Display the Service center number of SIM2.

--Validity period: You can set the validity period of the message for 1 hour, 6 hours, 24 hours, 72 hours, 1 week and the maximum value.

--Message Type: Choose the Type of message text, Paging, Email, Fax.

--Delivery report: Make it on/off.

--Direct Reply: You can make the reply path on/off.

--Inbox Location: You can choose the storage position at SIM card or phone.

--Save Sent message: You can make the Backup in sent box on /off.

1.10 Message Capacity

This screen shows the storage status of SMS and the free space of your SIM card and your phone.

1.11 Schedule SMS

To schedule the SMS for a particular date and time.

2 Phonebook

The phone provides two kinds of storage media: SIM card and phone. The phone can store 500 entries. The capacity of the phone book on your SIM card depends on the type of SIM card provided by your network operator.

Enter the number in dialpad, press options and select "Add to contacts". Select the storage location then edit interface will appear. If SIM1 or SIM2 is selected, you need to edit the name and number. If phone is selected, you need to edit the items that you set in the settings of phonebook, including the name, number, caller picture, caller ringtone, caller group.

The phonebook allows quick search through it. Input what you want to search, Enter the first letter to the white blank box, then all the records starting with such letter will be displayed.

Press Option under contacts menu :

Add new contact: This option is at top in the phonebook or select from options. You can add a new phone number to SIM1, SIM2 or phone.

Delete Multiple: You can delete multiple contacts.

Copy: You can copy contacts in phone memory, SIM1 memory and SIM2 memory.

Import / Export: Import and Export contacts to memory card.

Groups: A caller group is the combination of phone settings used to identify a particular group of records. The phone provides five call groups: Friends, Family, Business and Classmates. You can manage and edit details of caller groups using Group setting option

View: View the detailed information of the saved number.

Options:

- Edit: Edit the contact.
- Delete: Delete the saved contact.
- Send vCard: Share contact via SMS , MMS and Bluetooth.
- Edit before dialing: Edit contact before dialing.

3. Call Logs

Shows all call records, for example: Missed Calls, Dialed Calls, Received Calls.

3.1 All Calls

With this function, you can check all recent calls.

3.2 Missed Calls

With this function, you can check recent missed calls. Press the menu key to access Options, and you can Delete, Save to Phone book, call, and so on.

3.3 Received Calls

With this function, you can check recent received calls. In this function, you can Delete, Save to Phone Book, Call, and so on.

3.4 Dialed Calls

With this function, you can check recent dialed calls. In this function, you can Delete, Save to Phone Book, Call, and so on.

3.5 Rejected Calls

With this function you can check the rejected calls.

3.6 Delete All

Delete all the call logs: Last Call, Received calls, Dialed calls .

3.7 Call timer:

Last Call, Received calls, Dialed calls, Reset.

3.8 GRS Counter: You can get the detail of data usage.

Note : Default password is "0000".

4 Settings

4.1 Phone Settings

4.1.1 Time and date

Set time	Set the time
Set date	Set the date.
Time format	Set the time format
Date display	Set the date display format
Auto Update with time settings	Update date and time automatically from network

4.1.2 Language

Select the language for your handset.

4.1.3 Input method settings

Set input method for text entry.

4.1.4 Auto power on/off

Set the time to power off/on the phone automatically.

4.1.5 Power Management

Set the power management mode when your battery power is low.

4.1.6 Restore factory settings

Reset the phone to default values (factory settings).

The phone password is required, which is "0000" by default.

4.2 Display

Animations effect	Select the animation effect.
Wallpaper settings	Set a wallpaper of your choice.
Main menu style	There are Matrix menu/U menu two menu for your choice.
Idle Display settings	Set the time & date /SIM1 /SIM 2

Contrast	Set the backlight brightness
Keypad backlight time	Set the Keypad backlight time. Have "20 seconds", "10 seconds", "5 seconds," "night mode" and "off" five ways to choose

4.3 Security

The phone provides several security options to protect your phone from misuse.

4.3.1 PIN

You can enable / disable the SIM lock.

Warning: Warning: please careful use this function, such as forget PUK password, and please consult the network operators. If for 10 times PUK yards input errors, SIM card will be scrapped.

4.3.2 Modify PIN2:

PIN2 (Personal Identification Number2) code is in some special function into (such as in setting fixed number) will enter personal identification number2.

Warning: please careful use this function, if continuous 10 times PUK2 yards input errors, SIM card will be scrapped.

4.3.3 Phone locked

If the phone lock is activated, the phone lock password is requested after the phone switched on. The default password is "0000". If the phone is locked, only emergency calls can be made.

4.3.4 Modify the cell phone password

The password of mobile phones can be changed.

4.3.5 Fixed dial number

Open the fixed dial-up function. If not you should find an operator for help.

4.3.6 Blacklist

To reject the call / message from a particular number, save the number in blacklist.

4.3.7 Whitelist

To allow the call from a particular number, save the number in whitelist.

4.4 Call settings

4.4.1 Dual SIM setting

Set standby mode , Reply by original SIM , Set SIM name and colour.

4.4.2 Call divert

You can specify the conditions under which calls should be diverted to your voicemail box or another number.

Call forwarding unconditional	All calls are diverted.
Call forwarding on busy	A call is diverted if the phone is switched off or is out of range.
Call forwarding on no reply	A call is diverted if not answered.
Divert if unreachable	A call is diverted if another call is in progress.
Cancel all divert	Cancel all call divert settings.

4.4.3 Call waiting

Activate	If activated, an incoming call is signaled by a call waiting tone when you are on another call. The number/name of the incoming call is displayed.
Deactivate	Cancel the call waiting function.
Query status	Inquire the current status from the network.

4.4.4 Call barring

Restrict the dialing or receiving of certain calls. To activate or cancel call barring, you have to enter the network password provided by your network operator.

4.4.5 Select Line

This function is supported by operator to switch to Line 1 or Line 2.

Note: If you select Line 2, whether you can make calls which depend on the network operator.

4.4.6 Hide ID

When you make a call, your number can be shown or hidden on the display of the called party. Select Set by network to use the default setting provided by the network operator.

You may not be able to make calls if you select Hide ID, depending on the network setting.

4.4.7 Others

- Call time minute reminder: If activated, the phone beeps at the interval time you set during a call.
- Auto redial: You can on/off this function. When it is on, a failed dialing will automatically redial.
- Vibration when connect: When activated, Phone will vibrate when the call is connected.
- Reply SMS after reject: When activated, you can reject a call by sms.
- Auto record voice call: You can on/off this function. If it is on call will be recorded automatically.

- Auto answer in headset: You can on/off this option. If this option is on then the call will be automatically answered when the headset is connected with phone.

4.5 Connections

4.5.1 Network account

Customize the Internet account

New connection: You can add a new connection profile.

- Add from list: You can add a connection from list.
- Search: You can search a network profile.
- Download network account: You can download network account from internet.

4.5.2 GPRS services

You can activate / deactivate GPRS services.

4.5.3 DATA roaming

You can enable/disable data services while roaming.

4.5.4 DATA roaming

Set data connections settings.

4.5.5 Network selection

You can set network selection automatic or manual.

5 Y Zone

5.1 Smart Auto Call Record

You can on/off this function. When it is "on" all the incoming calls will record at the defined storage place.

Note: By default the storage is Audio folder of phone memory, after the phone memory is completely full the file will save in Audio folder of memory card.

When Auto Call record is activated the file will save in the following format:

Phone number<Date (YY-MM-DD)<Time (Time will be in 24hr clock format)

5.2 Private Data Protections

It is used to password protect phonebook, call logs ,message ,camera,contacts, My Files, Ebook,Calendar, mass storage,video player, audio player .To activate this function user need to provide the security code " 0000" and user need to switch on this function.

Note:The default password of privacy protection mode is "0000".

5.3 Mobile Tracker

Now do not panic, even if your handset is misplaced. The Mobile Tracker feature in W617 allows you to keep a track of your handset if it is lost. Just activate Mobile Tracker application and assign the numbers, so that if you lose your handset, you can receive a warning SMS on those pre-defined numbers.

The default Mobile Tracker password is "0000".

5.4 Games

5.4.1 Tetris

Tetris game is a popular and classical game all over the world; it is very simple to play. Play process, navigation keys and left soft key control game.

5.4.2 Snake

Snake game is a popular and classical game all over the world; it is very simple to play. Play process, navigation keys and left soft key control game.

5.5 Facebook/MSN/Yahoo/Hungama

You can sign in to facebook , MSN ,Yahoo , hungama by the direct link provided in you mobile phone. This will work only when GPRS service is activated in your SIM.

6 Multimedia

You have Video Recorder, Video Player, Image Viewer, FM radio and sound recorder functions in Multimedia.

6.1 Video Recorder

Video recorder is used for video shooting. Press the red button to start recording, pause or resume. The video clip is saved to the phone or T-Flash card.

Options for Video recorder are listed below.

Camera	Can switch camera and recorder direct.
image property	Change the brightness , contrast etc.
Effect	Select the effect of video.
Settings	Set size, Banding, audio, video format, storage

6.2 Video player

Video player allows you to browse or process video files.

Press Options under video player menu :

Local playlist	Play videos from playlist.
Local browse	Browse videos from memory card and phone.
Settings	In settings there are options repeat , shuffle

	etc.
Set as screen saver	Set the video as screen saver.
Set as power on animation	Set the video as power on anime.
Set as power off animation	Set the video as power off anime.
File attributes	See the details.
Exit	Exit from video player.
Increase volume	Up navigation key
Decrease volume	Down navigation key
Stop Video playback	# key
Change to portrait mode	* key

6.3 Image Viewer

Upon entering the Photo Album, the photos are listed as thumbnails. Several functions are available by Options menu:

View: Preview the selected image.

Set as: Set as Wallpaper, Contact head shot and screen saver.

Share: Send by MMS or Bluetooth.

Rename: Rename the selected image.

Delete: Delete the selected image.

Mark: Mark the selected image or all images.

Slideshow: Display by slideshow.

View detail: Look up the name, file type, size, date, and stored place.

6.4 FM radio

This option allows you to listen FM radio.

Options:

Auto search and save	Auto search channels and save.
Record	Record FM.
Save	Save the channel.

Open speaker	Open speaker.
Manual search	Search the channel manually.
Record file list	Watch the recorded file list.
Storage	Set the recorded file storage to phone or memory card.
File format	Save the file format.

6.5 Sound Recorder

Your phone supports recording .You can record your voice with the help of this function.

7. Profiles

The phone provide five pre-defined user profiles that allow the operations of the phone to best suit the environment you are in. The profiles are Normal, Silent, Meeting, Indoor, Outdoor.

Note: You can directly access the silent mode via long pressing # key.

You can customize the following options for new profiles.

Rename:	Change the profile name.
Ring settings	You can change ringtones for call and message.
Adjust volume	Set volume for caller ringtone, message ringtone, call volume, power ringtone etc.
Ring type	You can change the ring type in Ringtone, Vibrate, Silent, Vibrate then ring, Ring and vibrate.
Other alert rings	Set key tone, touch tone, battery low alert, power ringtone, dial pad vibrate, dial pad tone, screen lock tone.

8. My files

You can use File manager to save your files.

If a memory card is inserted, the files stored on it are organized separately.

Select Phone or Memory card and select following options new folder, search, sort, mark, memory status etc.

9. Organizer

9.1 Backup

Backup your phone, call records, the text messages, calendar task.

9.2Calendar

Options:

Add new schedule	You can add a new schedule.
View schedule	You can view the already saved schedule.
All schedule	You can view all schedules.
Clear today's task	Delete today's schedule.
Clear all	Clear all saved schedules.
Go to date	Go to date.
Indian calendar	Select Indian calendar to see tithi, festival etc.
Onscreen prompts	Set onscreen prompts.

9.3 Calculator

You can calculate the mathematical calculations using calculator.

9.4 World clock

User can check the current local date and time of major cities in the world.

9.5 Clock

9.5.1 Alarm

User can set three types of alarm clock time if required. Then the alarm icon will be displayed on the idle screen.

9.5.2 Stopwatch

This function is used to measure time.

9.5.3 Timer

Enter the function list and select Countdown timer.

9.6 Unit conversion

The unit includes length and weight of the conversion of the conversion unit.

Weight

This option for "kg <-> pounds", "kg <-> ounces" conversion

Length

This option for "kilometers <-> miles", "m <-> yard", "m <-> foot", "cm <-> inches" conversion.

9.7 Bluetooth

- Bluetooth: Allow you to switch on/off Bluetooth.
- Bluetooth visibility: Allow you to switch on/off Bluetooth visibility.
- Paired Device: Paired devices will be listed.
- Shared folder settings: Set the folders to share.
- Device name: Set your device name.
- Bluetooth file storage: Set the Bluetooth file storage to phone or memory card.
- Help: It will all the information how to use the Bluetooth.

9.8 E-book

The phone supports reading files in the *.txt format.

Store the *.txt files in the EBook folder, and then you can read them in E-Book.

9.9 STK

To browse the SIM service.

10 Audio

Audio player allows you to play mp3 audio files by making playlist.

Now Playing: To play songs from preloaded list.

Options:

Music list	It will open all the playlists.
Set as incoming call ringtone	Set the current playing file as ringtone.
Display settings	Set display settings.
Add to saved playlist	Add the song to saved playlist.
Set as alarm ringtone	Set the current playing song as alarm ringtone.
Add to new play list	Add the current playing song to new playlist.
Settings	Player Settings include Repeat, Shuffle & Equalizer. BT stereo output.

11 Services

This function allows you to acquire or visit diversified services on the internet through message or network, please contact your network operator for more information.

Note: Your Internet service provider may not support some functions. In order to guarantee the normal operation of the browser line, please confirm your SIM card which can support the Internet and open up the function.

11.1 Input URL

Input web page address, you can understand the world convenient.

11.2 Bookmarks

You can edit the bookmark on your own way. Set specific operation as follows: add new bookmarks , add folder , mark.

11.3 History

Record the web addresses you have visited.

11.4 Homepage

It will open the webpage, you set as your homepage.

11.5 Settings

You can change the settings of the browser.

Exit

Exit from browser.

12. Camera

Before using Camera, make sure you have inserted a memory card. The photos will be saved in JPG format to your memory card.

Note:

➤ Taking pictures in dim lighting may result in poor picture quality.

The phone is provided with a built-in mega pixel camera at the back, which supports the photographing and video shooting functions. Pictures are saved in the file system of the phone. You can send the taken pictures by the MMS/Bluetooth function provided by the phone.

Options :

- Video Recorder : You can select camera or video recorder.
- Image property : You can change brightness, contrast etc.
- Effect : You can set effects like B&W, Blue, Green, Yellow, Red, Sepia, Negative.

Settings :

- Quality : You can set the quality low,normal,advanced.
- Size : You can select different image sizes.
- Night mode : You can on / off this function.
- Cont. Shot : You can capture more than one picture with the help of this function.
- Delay : You can set the delay.
- Banding : You can change the band.
- Shutter sound : You can on / off this function.
- Auto save : You can on / off this function.
- Storage : You can set the storage memory to phone or memory card.

Technical Specification W617	
GSM Network	900/1800MHz
Display Size	7.6Cm
Battery Capacity	1500mAh
Charger Specification	Input :AC100-300V/50-60Hz Output: DC 5V/500mA
SAR Value	0.772 W/Kg
Camera Resolution	1.3 Mega Pixel



Limited Warranty Terms and Conditions

Wynncom Digital Devices Pvt. Ltd., (hereinafter referred to as the 'Company') provides this Limited Warranty to the purchaser of the Wynncom mobile handset and original accessories (Battery, Charger, Hands free etc.) supplied in the sales package (hereinafter collectively referred to as the 'Product').

Warranty period

Subject to the conditions specified herein, the Company warrants the Product to be free from defects in design, material and workmanship at the time of its original purchase and for a subsequent period of one year for the Transceiver, six months for the Accessories (Charger/ Battery/ Hands free/ Data cable); all periods commencing from the date of purchase.

How to get warranty service

To obtain warranty services, the purchaser needs to bring the Product to the Company's Authorized Care Centre at his/her own cost, along with the original proof of purchase, bearing unaltered/ unmodified date of purchase and IMEI number.

The Company's Limited Warranty extends only to the original purchaser/ end user of the Product, and is not assignable or transferable to a subsequent purchaser/ end user

Provisions and Exclusions

This Limited Warranty does not cover a) normal wear and tear; b) defects caused by improper handling; c) defects or damages caused by misuse of the Product, including use that is contrary to the instructions provided by the Company set out in the Product's User's Manual; and/or d) other acts beyond the reasonable control of the Company (including but not limited to Force Majeure, Lightening, Voltage surge, etc.)

During the warranty period, the Company or its Authorized Care Centre may repair or replace at its sole discretion, any defective Product(s) or part(s) thereof with new or factory rebuilt/ re-conditioned item(s) and return the Product to the purchaser in working condition. All replaced part(s)/ item(s) shall become the property of the Company.

The repaired or replaced part(s) or item(s) shall stand warranted only for the remaining warranty period since the date of purchase.

The warranty shall cease to exist in the absence of the original proof of purchase, or in case the original serial number/ IMEI is removed, modified or obliterated, or if the Product is damaged due to liquid spillage, exposure to moisture, exposure to extreme thermal or environmental conditions, or if there is a physical damage to the Product, or if the Product was found tampered/ found opened, modified or repaired by anyone other than the Company's Authorized Care Centre.

The warranty terms are subject to change without prior notice.

Except for any liability that cannot be excluded by law, the Company (including its related entities and their respective officers, employees and agents) excludes all liabilities (including negligence), for any loss of profit, business revenue, goodwill, anticipated savings or data, personal injury; or any loss or damage (including loss of opportunity); whether direct, indirect, special or consequential, arising in any way out of the Product.

All disputes are subject to the jurisdiction of courts of Delhi only.

Wynncom Care – 1800 102 9299
9.30 AM to 6.30 PM (7days a week)

Email us at customercare@wynncom.net
Visit us at www.wynncom.net